

ENCLOSURE INSTALLATION DIAGRAM

INSTALLATION DIAGRAM • R2

- 1 Position the back plate properly on top of the mounting plate; tighten the bolts and nuts to join these two plates together securely.
- 2 Position the wall plate that has been attached to the back plate, and tighten the screws to secure them on the enclosure.
- 3 Mount the enclosure on a wall or a surface and tighten the screws to secure its position.
- 4 Hang the terminal on the back plate, tighten the 2 screws at the bottom of the terminal.
- 5 Make sure that the enclosure has been mounted firmly by tightening all the screws.

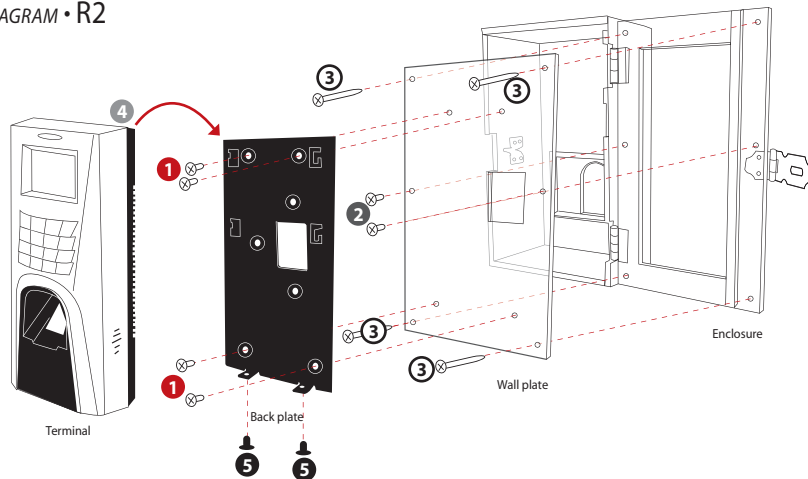
Note:

Installation of enclosure with access control models

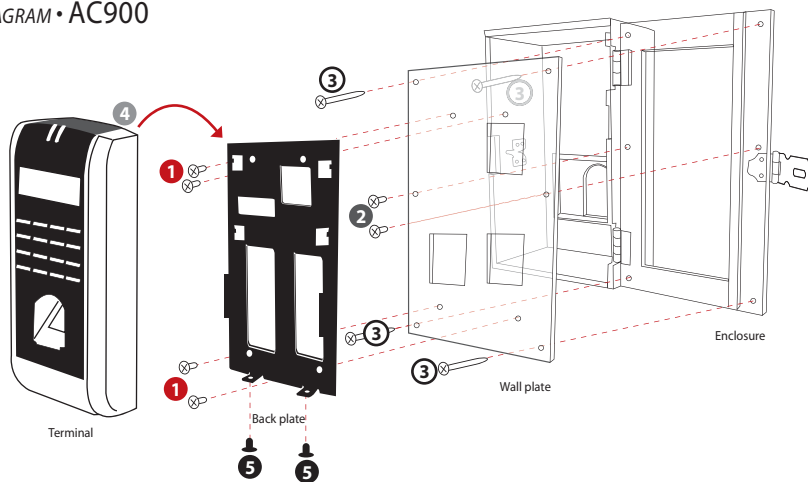
Before you start with step no. 1 above, make sure that all the terminal's wires are put through the enclosure, back plate and wall plate, and all the wires are connected to the terminal's ports correctly.

Note:

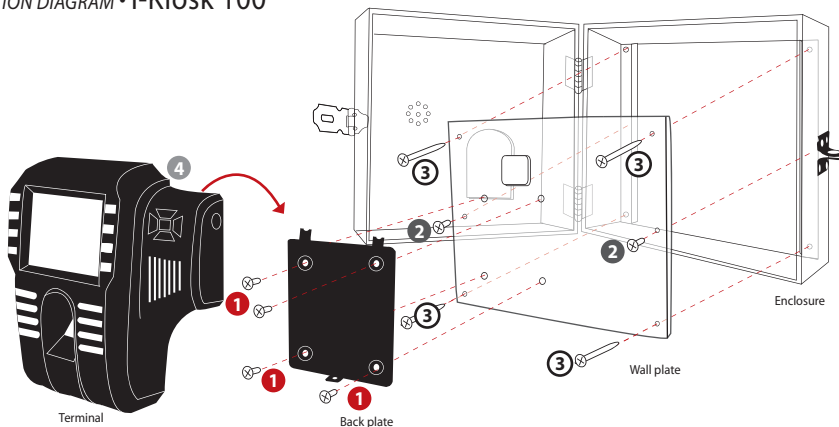
The package does not include the screws needed to secure the enclosure to a wall



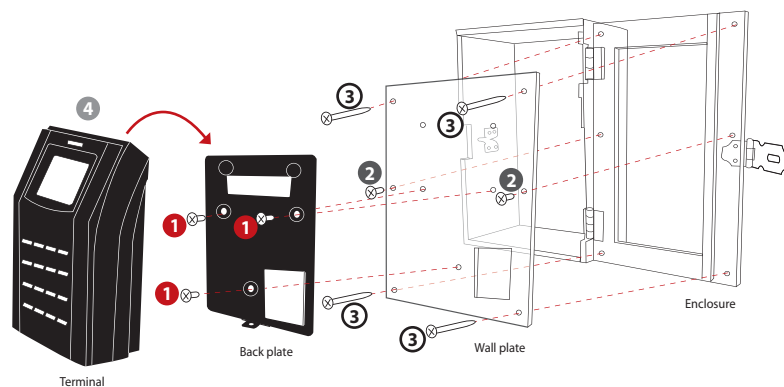
INSTALLATION DIAGRAM • AC900



INSTALLATION DIAGRAM • i-Kiosk 100



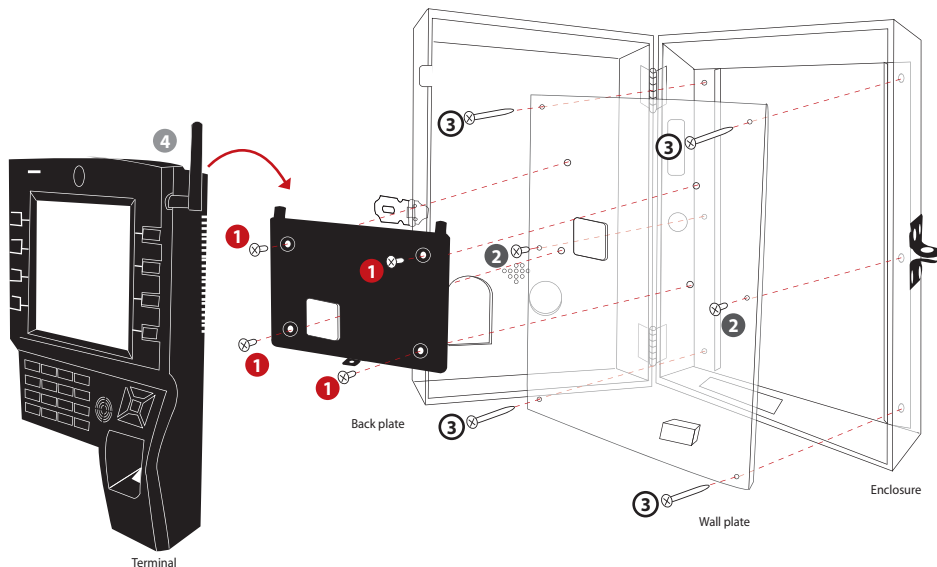
INSTALLATION DIAGRAM • Kadex



ENCLOSURE INSTALLATION DIAGRAM

INSTALLATION DIAGRAM • i-Kiosk 100 Plus

- 1 Position the back plate properly on top of the mounting plate; tighten the bolts and nuts to join these two plates together securely.
- 2 Position the wall plate that has been attached to the back plate, and tighten the screws to secure them on the enclosure.
- 3 Mount the enclosure on a wall or a surface and tighten the screws to secure its position.
- 4 Hang the terminal on the back plate, tighten the 2 screws at the bottom of the terminal.
- 5 Make sure that the enclosure has been mounted firmly by tightening all the screws.



INSTALLATION DIAGRAM • TA100C Series / TimeLine 100

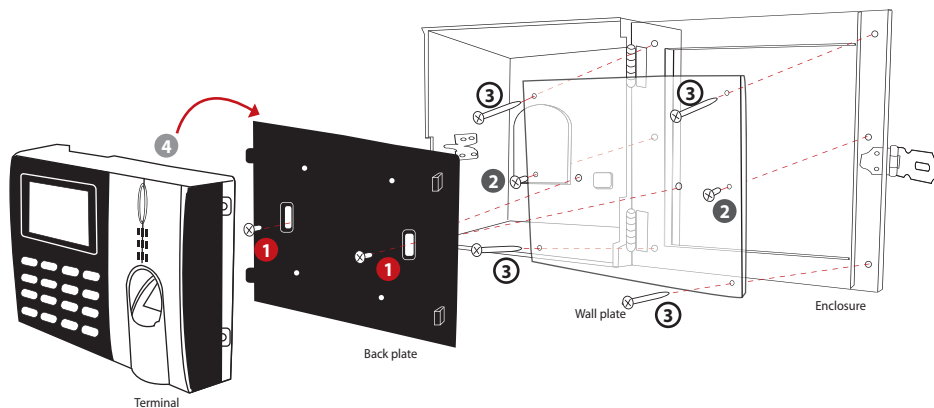
Note:

Installation of enclosure with access control models

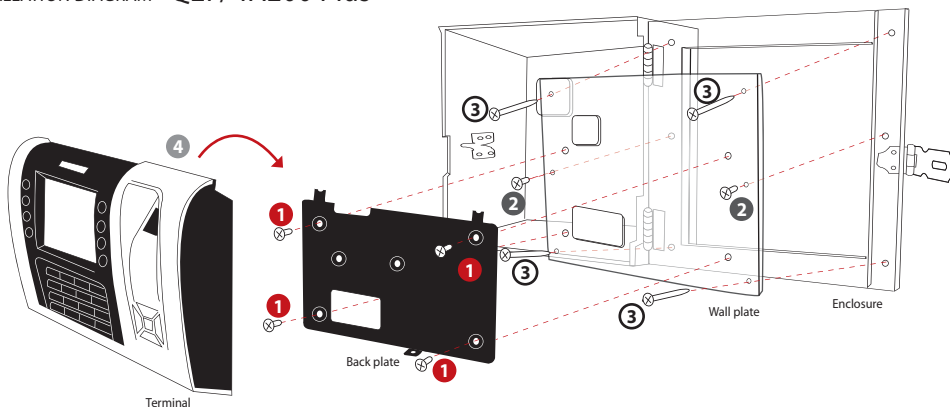
Before you start with step no. 1 above, make sure that all the terminal's wires are put through the enclosure, back plate and wall plate, and all the wires are connected to the terminal's ports correctly.

Note:

The package does not include the screws needed to secure the enclosure to a wall



INSTALLATION DIAGRAM • Q2i / TA200 Plus



INSTALLATION DIAGRAM • AC100C Series

- 1 Position the screws on the wall plate to hang AC100C terminal.
- 2 Place the wall plate on the enclosure; tighten the screws to secure it on the enclosure
- 3 Mount the enclosure on a wall or a surface and tighten the screws to secure its position
- 4 Hang the AC100C terminal on the wall plate.
- 5 Make sure the enclosure has been mounted firmly on a wall by tightening all the screws.

