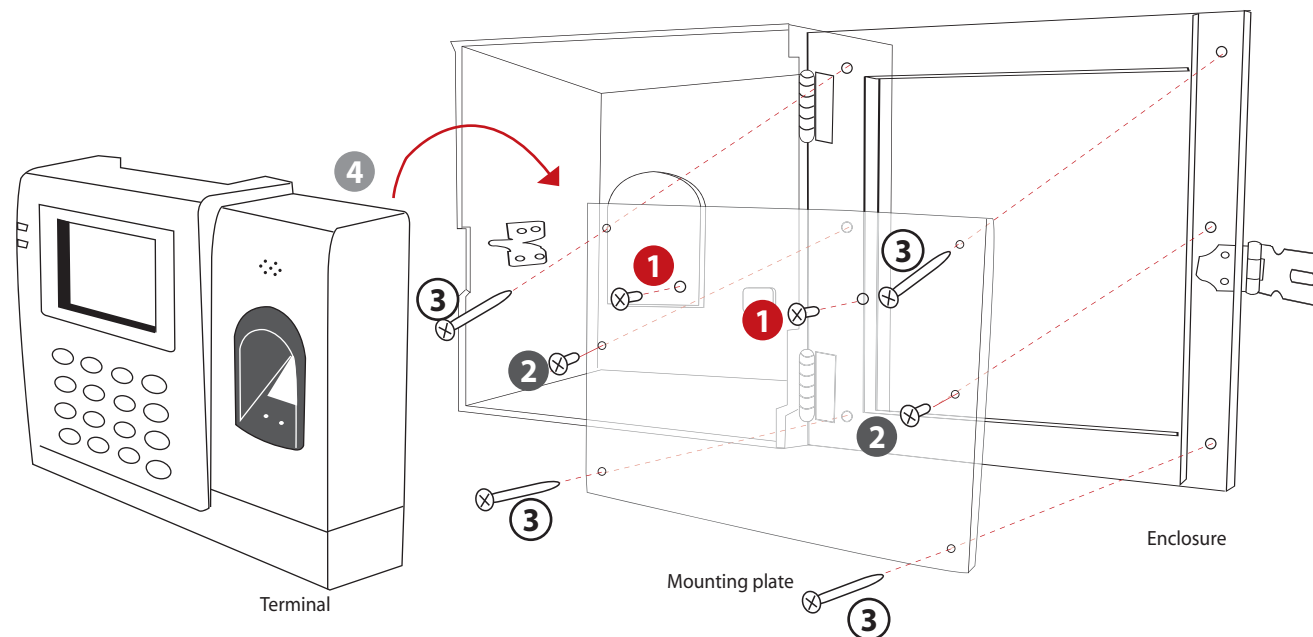


AC100C Series

ENCLOSURE INSTALLATION DIAGRAM

- 1 Position the screws on the mounting plate to hang AC100C terminal.
- 2 Place the mounting plate on the enclosure; tighten the screws to secure it on the enclosure
- 3 Mount the enclosure on a wall or a surface and tighten the screws to secure its position
- 4 Hang the AC100C terminal on the mounting plate.
- 5 Make sure the enclosure has been mounted firmly on a wall by tightening all the screws.



Note:

INSTALLATION OF ENCLOSURE WITH ACCESS CONTROL MODELS

Before you start with step no. 1 above, make sure that all the terminal's wires are put through the enclosure, back plate and wall plate, and all the wires are connected to the terminal's port correctly.
The package does not include the screws needed to secure the enclosure to a wall.